

**RAIL SAWS AND
RAIL DRILLS**

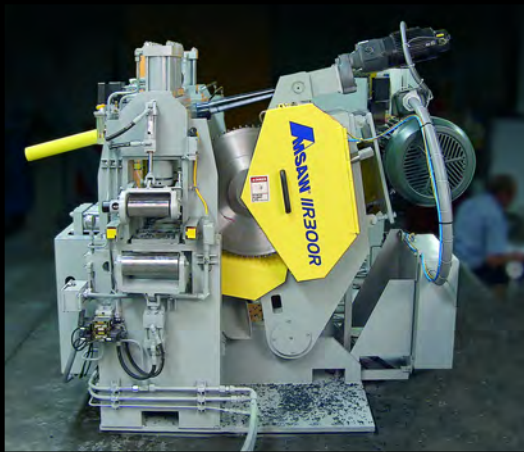


MSAW[®]

The cutting edge of saw technology.

**ADVANCED
MACHINE & ENGINEERING CO.**

Combined Saw/Drill Unit Designed for Railroad Industry



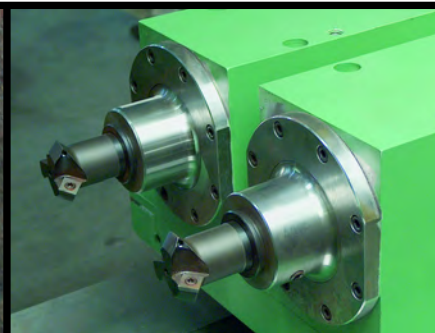
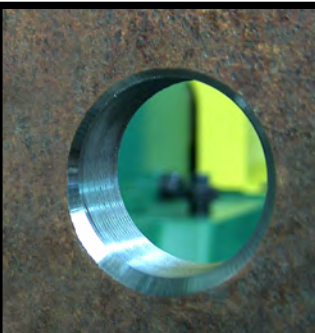
Advanced Machine & Engineering's Amsaw R-series saw is made specifically to cut rails for the railroad industry. The combined saw/drill unit is designed to improve efficiency and productivity. It boasts a saw blade changeover time of less than 3 minutes — and minimized downtime means maximized output!

Benefits include smooth, accurate cuts; more durable machinery; and longer tool life. Designed for high-production cutting of high alloy rails, the rail saw offers many features, including:

- Hardened spindle gears ground for minimum backlash
- A special saw blade guide and dampening device for accurate cutting to stabilize the blade
- A low-maintenance design
- Dry operation in which no coolant is needed
- A 32-second clamp to unclamp time
- An electronic overload device to monitor cutting performance and stop saw feed when necessary
- A heavy, welded machine base, ribbed and braced for rigidity
- A chip conveyor to convey chips to the rear of the machine for deposit into a tote box
- Operator-friendly controls with color touch-screen display use Programmable Logic Controller (PLC), include complete system diagnostics, and are ethernet-capable.

The R-series saw also offers a flexible setup. It can be combined with an integrated or inline rail hole drilling for bolted joints at the rail ends or with infeed and outfeed material handling systems.

Capacity Rail	Up to 141 lbs.
Cutting Speed	100 – 500 SFM / 30m/min -152m/min.
Spindle Feed	4" - 40" per min. / 100mm/min. -1500mm/min.
Spindle Motor	50 HP / 37 kW
Blade Diameter	24" - 26" / 600mm - 660mm
Hydraulic Tank Capacity	40 gal. / 151 l
Hydraulic Pump Motor	7.5HP / 5.6 kW
Electrical Requirements	480V – 3Ph - 60Hz
Weight	12,000 lbs. (5,500 kg)



ISO-9001:2000
REGISTERED

Data subject to change
AME-RS-0508 Q1000M
Printed in USA
Copyright © 2008

2500 Latham Street Rockford, IL 61103
Tel: 815-962-6076
www.ame.com

ADVANCED
MACHINE & ENGINEERING CO.